

# WALHALLOW

ABORIGINAL CORPORATION

MONTHLY NEWSLETTER ● AUGUST | SEPTEMBER

## REMINDER

School Holidays are Coming Up- Book in for 715 Health Checks

With the school holidays just around the corner, it's the perfect time to get your kids booked in for their 715 Health Checks. These comprehensive health checks are designed especially for Aboriginal and Torres Strait Islander children to make sure they're growing well, staying healthy, and are up to date with any care or follow-up they might need.

## PROSTATE CANCER AWARENESS

If you've noticed our clinics glowing blue after dark, it's because this September we're joining the Turn Australia Blue movement. Each night, we shine a light to raise awareness about Prostate Cancer and the importance of early detection.

Prostate Cancer is one of the most common cancers in men but with regular checks, it can often be detected early when treatment is most effective.

If you'd like to book a check-up, please contact us.



## CEO COMMENT

Stay Deadly, Stay Healthy - don't Wait, Screen Early.

At Walhallow Aboriginal Corporation Health Service, we believe strong families and strong communities begin with good health. Chronic conditions like diabetes, heart disease, kidney disease and cancer can often be prevented or managed when found early.

Screening is not just a medical check it's about taking care of ourselves, our families, and our culture for the generations to come. Together, let's stand strong, get checked, and keep our community healthy and thriving."



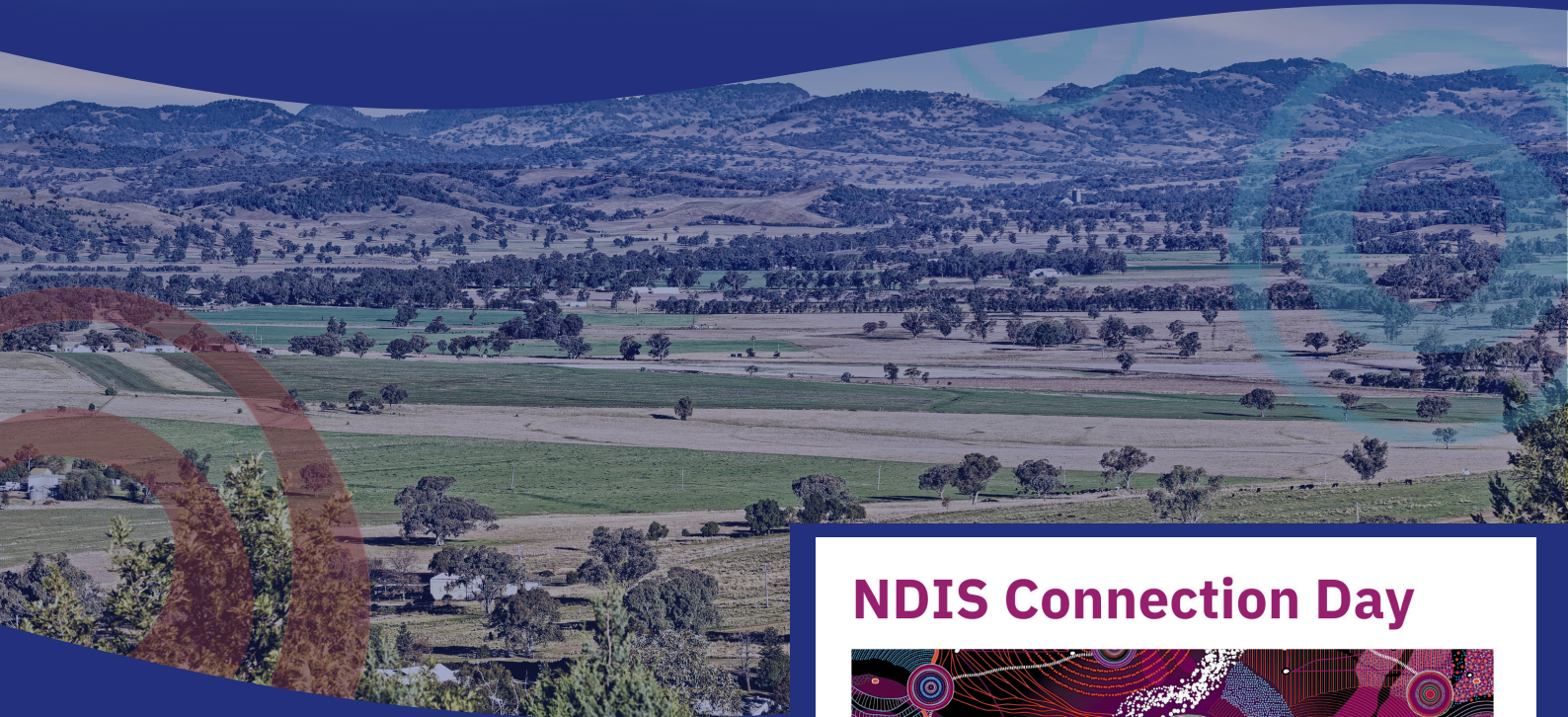
## 6 WEEK OLD 715 BAGS

Walhallow Aboriginal Corporation is excited to now offer Baby Bags for Aboriginal and/or Torres Strait Islander babies who complete their 6-week 715 Health Check with us.

These special bags are filled with practical items and little goodies to support families and give babies the best possible start to life. We're proud to be able to provide this extra support for our youngest community members and their families.



# COMMUNITY EVENTS



## Walhealth Men's Group Walhallow

Starting Monday 15th September 2025

10:30am

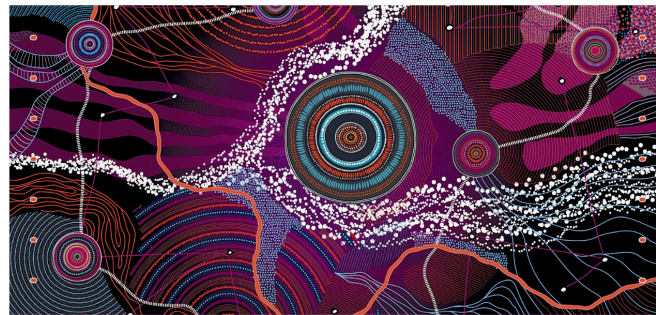
### Walhallow HealthPost

Join us for a BBQ and a yarn  
Come together for a relaxed feed and a chat  
about men's health, and share what activities  
you'd like to see for men in our community.



**WALHALLOW**  
ABORIGINAL CORPORATION

## NDIS Connection Day



**Come along and have your NDIS-related questions answered by a representative of the NDIS. No booking required.**

- Learn more about the NDIS and how to apply.
- Understand the available options if you don't meet the NDIS eligibility criteria.
- Discover how to use your NDIS plan to its full potential.
- Chat with an industry expert about any of your NDIS or disability-related questions.

**Additional information:** If you have any accessibility requirements please let us know prior to attending. Please send us a minimum of five (5) business days' notice to book Auslan interpreters. Please email your request to [uniting.customercare@ndis.gov.au](mailto:uniting.customercare@ndis.gov.au) or call us on **1300 453 303**

#### Time and place:

Walhallow Health - Coledale  
Tuesday - 9.30am - 12pm

September 16/9/25	October 07/10/25	November 11/11/25	December 2/12/25
----------------------	---------------------	----------------------	---------------------



**WALHALLOW**  
ABORIGINAL CORPORATION

*'Journey Flows' by David Williams of Gilmbarra.*



**Uniting**

Delivering the NDIS in your community

© Copyright Uniting NSW ACT 2024 24-LAC-6.LNOV24



QUIRINDI CLINIC

☎ 6746 2001



COLEDALE CLINIC

☎ 6788 3030



WALHALLOW HEALTHPOST

☎ 6747 4854



# NOTICES

## ART COMPETITION

Walhallow Aboriginal Corporation is working on our new cancer strategy, and we want it to be community focused. We're looking for powerful, culturally strong artwork to feature in our documents and social media art that speaks to community, connection, and strength.

**The winning artist will receive \$500 prize money and their artwork featured in our cancer strategy branding.**

**Theme: Community, connection and strength.**

This is an opportunity for both emerging artists and established artists aged 12 and over.

Please note: The winning artist will be required to sign a license agreement to hand over the rights of the artwork to Walhallow Aboriginal Corporation. The artist will still be recognised as the artist in this case.



## MORE INFORMATION

Digital and Physical art is accepted

**Theme: Community, connection and strength.**

This theme is about showing the power of mob coming together to look after each other, especially when it comes to our health and wellbeing.

**Community** – Our people, families, Elders, and future generations. It's about walking side by side, making sure no one is left behind. Community is the heart of who we are, and it's what keeps us strong.

**Connection** – Our ties to each other, to culture, to Country, and to our stories. Connection reminds us that healing is not just physical it's also spiritual, cultural, and emotional.

**Strength** – The courage and resilience our people show every day. Strength is about standing tall through challenges like cancer, and finding hope in the support of community and culture.

**Entries close 12th October 2025**

please deliver your artworks to any of the Walhealth clinics. If you have digital artwork please call your clinic for further instructions.

All artwork entered must be the artists original work.



## Work with us!

### Clinical Nurse

#### Tamworth

Walhallow Aboriginal Corporation Health Service has delivered culturally safe, community-controlled healthcare in the Quirindi region for over 30 years. Our mission is to improve the health and wellbeing of Aboriginal and Torres Strait Islander people.

We're seeking a dedicated Clinical Nurse who is passionate about making a real difference

#### What you'll be doing

- Delivering primary healthcare, triage, health checks & assessments
- Administering care plans, immunisations & procedures
- Managing infection control, records, billing & stock
- Working with the team to plan clinic workloads

#### What we're looking for

- Registered Nurse (AHPRA) with relevant experience
- Knowledge of Aboriginal health & chronic disease care
- Strong clinical, problem-solving & teamwork skills
- WWCC, Police Check, First Aid, COVID-19 vax & NSW Driver's Licence

#### What we offer

- Competitive salary + packaging
- Relocation & PD opportunities
- Supportive team making real impact



## Work with us!

### Nurse

#### Quirindi clinic

Walhallow Aboriginal Corporation Health Service is seeking an **Aboriginal Health Practitioner or Endorsed Enrolled Nurse** to join our dedicated team. This is a key role where you'll provide high-quality, culturally responsive healthcare to our community.

#### About the role

- Deliver nursing care across clinics, home visits, and outreach programs.
- Administer medications, treatments, and procedures per guidelines.
- Support programs like 715 Health Checks and Immunisation clinics.
- Work with GPs and allied health for holistic care.
- Keep accurate patient records and documentation.
- Contribute to quality improvement and nursing protocol development.
- Provide health education and promote prevention.

#### About you

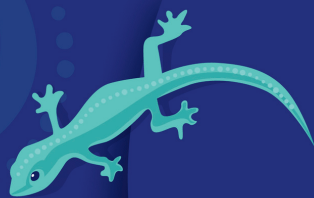
- Full Australian working rights and AHPRA registration (AHP or EEN).
- Experience in primary/community healthcare.
- Understanding of Aboriginal and Torres Strait Islander health needs.
- Strong clinical, organisational, and communication skills.



Want to become a member of Walhallow Aboriginal Corporation?

To become a member of Walhallow Aboriginal Corporation or for more information please email [secretary@walhealth.org.au](mailto:secretary@walhealth.org.au)



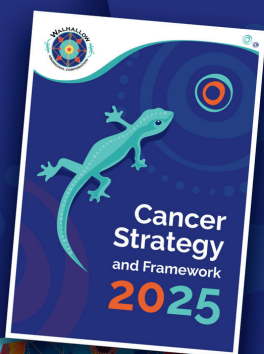


# Vision **Stronger Together**

Guided by the NSW Cancer Plan and Closing the Gap priorities, Walhallow is reducing cancer's impact through education, prevention, early detection, and holistic care. Partnering with Elders and health workers, we strive to reduce the cancer burden, deliver culturally safe care, and achieve equity in health outcomes.

**Stronger Together**

## Walhallow's Cancer Strategy



Aim to reduce cancer burden in Aboriginal communities.



Focus on culturally safe education, prevention, early detection, and holistic care.



Strive for improved health outcomes and equity.

Walhallow's Cancer Strategy

# 01

## Prevention & early Detection



- Expand culturally tailored Quit Smoking and healthy-lifestyle programs.
- Take mobile and school-based screening to every corner of Country.
- Embed routine cancer checks in all primary-care visits.



Walhallow's Cancer Strategy

# 02

## Culturally Safe, Community-Led Care



- Co-design every initiative with Elders and local leaders.
- Provide yarning-circle support that respects cultural protocols.
- Deliver education and clinics on-Country to build trust and empower families.



# 03

## Partnerships, Resources & Accountability



- Strengthen alliances with National Aboriginal Community Controlled Health Organisation (NACCHO), Aboriginal Health and Medical Research Council of NSW (AH&MRC of NSW), Cancer Institute NSW (CINSW), Hunter New England Local Health District (HNELHD), schools and sporting clubs.
- Pool resources to grow the skilled workforce and expand mobile clinics.
- Use advanced data-collection tools to track progress against Closing the Gap targets and report results transparently.



Walhallow's Cancer Strategy

## Stronger Together

By focusing on prevention, early detection, and culturally safe care, we will cut cancer's impact and build healthier futures for Aboriginal families.

